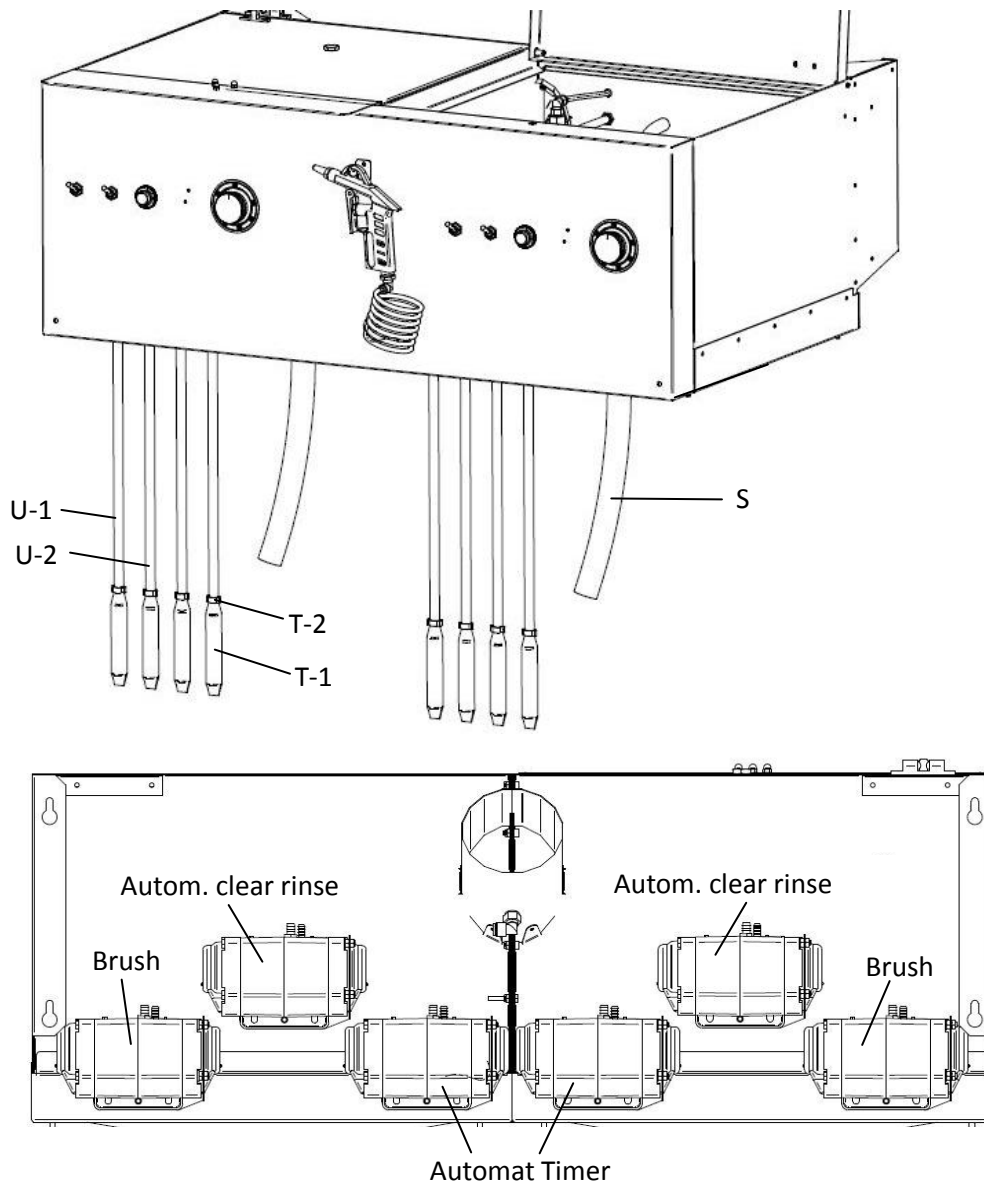


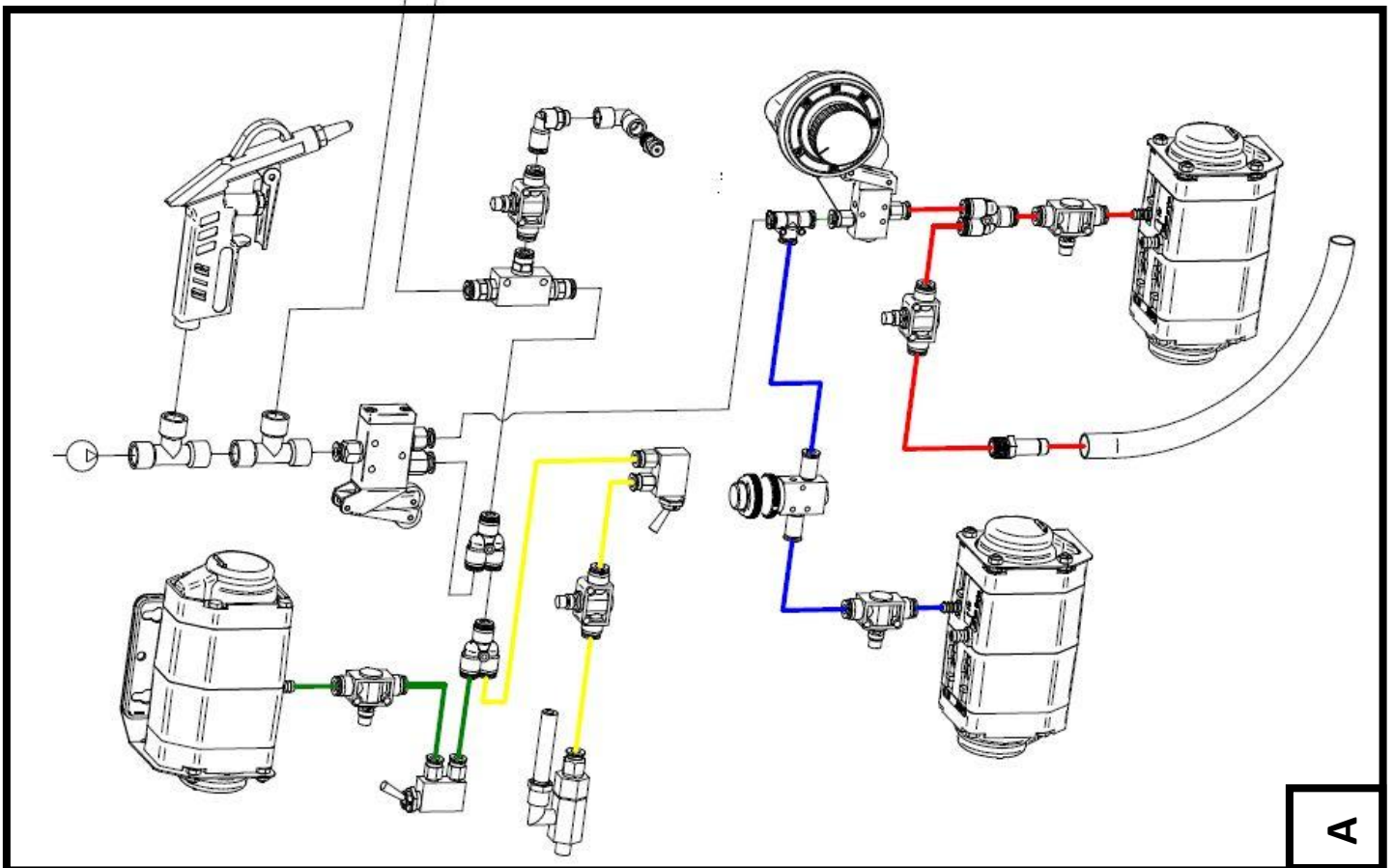
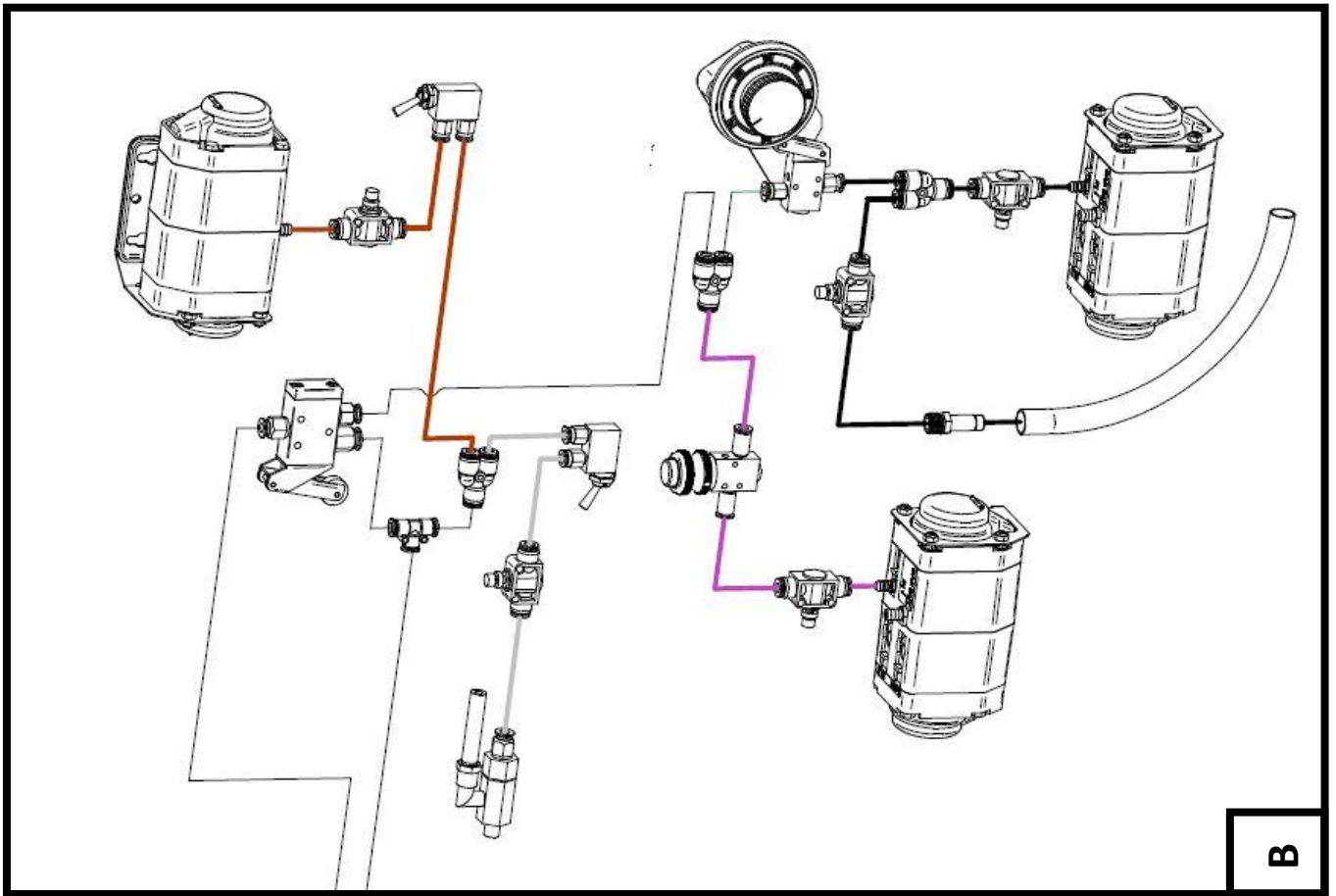
## 2.3 Part Names



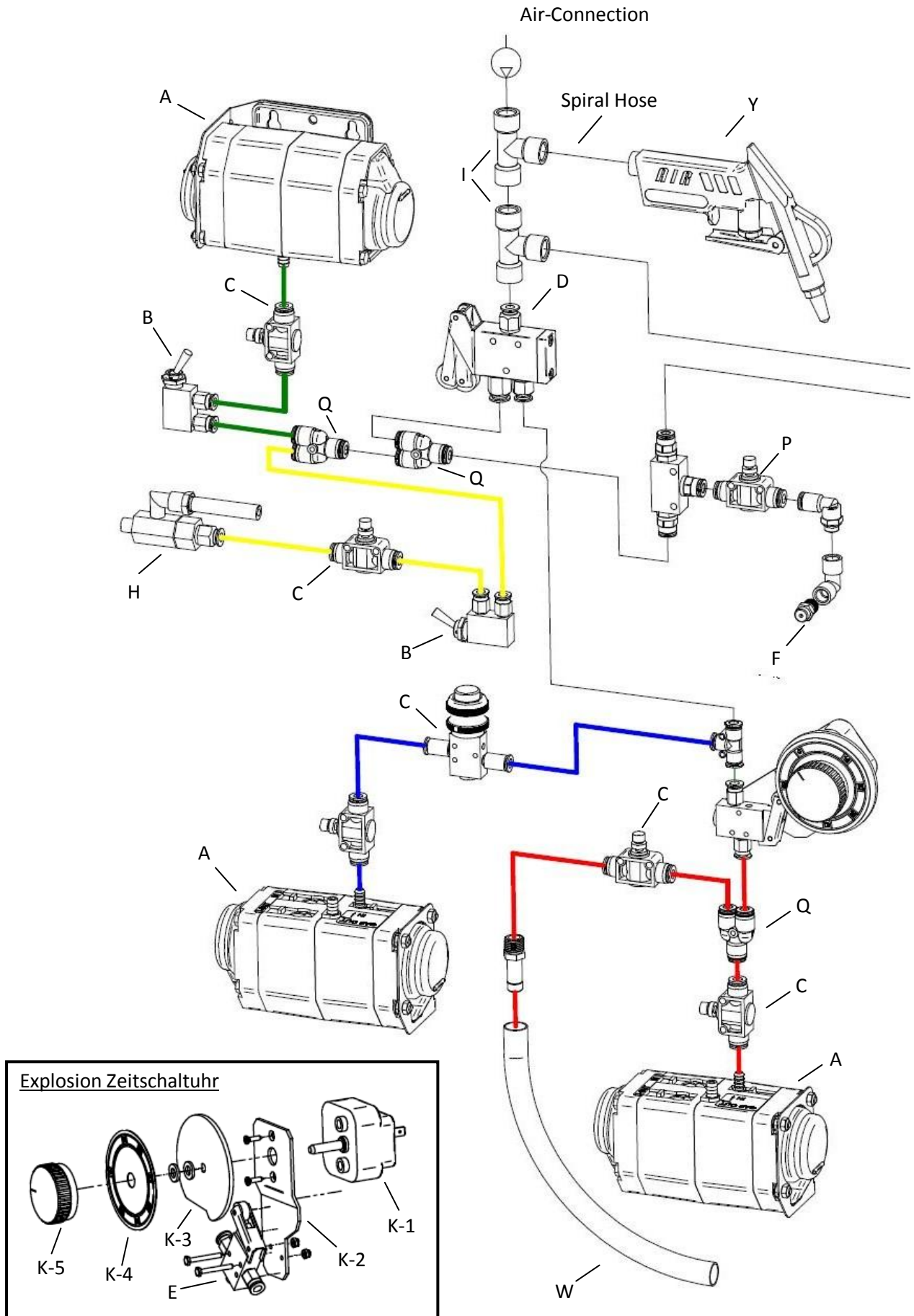
- |                                     |   |
|-------------------------------------|---|
| A - Pump 1/8"                       | O - Lid holder                              |
| B - Dip-switch                      | P - Or-valve G1/8"                          |
| C - Throttle valve                  | Q - Y-Connector                             |
| D - Role valve for activation G1/8" | R - Two ball snapper                        |
| E - Role valve 3/2-ways M5          | S - Discharge hose                          |
| F - Injector                        | T-1 - Intake-strainer                       |
| G - Button clear rinse              | T-2 - Strainer connecting clamp             |
| H - Fresh dilution jet              | U-1 - Transparent intake hose clean solvent |
| I - T- Connector                    | U-2 - Grey intake hose circulating solvent  |
| J - Cross connector                 | V - Brush with hose                         |
| K - Timer                           | W - Hose for flushing spray gun             |
| L - Air connection                  | Y - Grounding cable                         |
| M - Middle jet                      | Z - Blow gun                                |
| N - Cup holder                      |   |

- Spare parts ordering numbers on page 11 -

2.4 Pneumatic Plan



**Pneumatic Plan A**





## 2.5 Spare Parts Ordering Numbers

A	- Pump 1/8"	20.10.05
B	- Dip-switch	05.40.05.05
C	- Throttle valve	05.10.25.10
D	- Role valve for activation G1/8"	005.005.010.010
E	- Role valve 3/2-ways M5	05.05.05.05
F	- Injector	10.50.05.30 St.
G	- Button clear rinse	10.50.05.25
H	- Fresh dilution jet	10.50.15.25 St.
I	- T- Connector	045.060.015.005
J	- Cross connector	45.40.05
K-1	- Short-timer / clock unit	55.10
K-2	- Bracket	035.005.005.005
K-3	- Switch-plate	035.005.005.010
K-4	- Timer scale	55.15
K-5	- Timer button	55.05
L	- Air connection NW 7.2	50.20.05
M	- Middle jet	10.50.15.30
N	- Cup holder	10.50.15.15
O	- Lid holder	35.20
P	- Or-valve	05.55.05
Q	- Y-Connector	45.50.05
R	- Two ball snapper	70.35.05
S	- Discharge hose	30.25.20
T-1	- Intake-strainer	95.05
T-2	- Strainer connecting clamp	75.05.05
U-1	- Transparent intake hose clean solvent	30.25.10
U-2	- Grey intake hose circulating solvent	30.25.05
V	- Brush with hose	10.50.15.10
W	- Hose for flushing spray gun	30.25.15
Y	- Grounding cable	085.005.010.020
Z	- Blow gun	65.05.05
	Spiral hose with connections	030.030.010